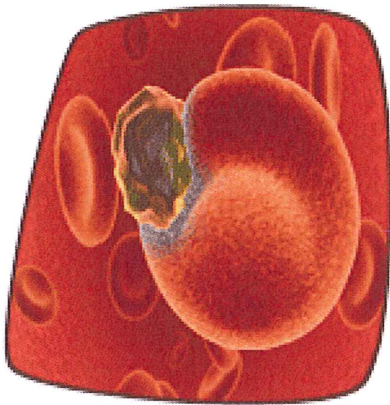


Diagnosis of Heparin-Induced Thrombocytopenia



HITAlert

A complete standardized High Quality Product for Diagnosis of HIT

First functionality test to diagnose HIT in surgical patients using ***flow cytometry*** with ***clinical experience*** of over 10 years.

Special features

- Provides rapid results (<2 hr) for clinical decision making and management
- Complete kit
- Non-radioactive method
- Uses readily available reagents.
- Employs standard equipment and methodology; requires some experience in handling platelets.
- Aspirin or Clopidogrel do not influence the results
- Extensive evaluation – Data Available
- Patented method



Background information

Heparin-induced thrombocytopenia (HIT) is an acute, immune-mediated process that may result in life-threatening thrombosis. HIT is caused by platelet-activating, heparin-dependent antibodies (recognizing complexes of heparin/platelet factor-4 (HPF-4)) and detection of these antibodies is an important laboratory function. These antibodies are initially formed after 5 or more days of heparin therapy. An immune response to a heparin dose may be observed within minutes or hours if the patient has had previous exposure to heparin and HPF-4 antibodies are already circulating. The risk of immune HIT varies depending on the type of heparin (unfractionated heparin greater than low-molecular-weight heparin) and patient population.

The hallmark symptoms of HIT are a drastic fall (> 50%) in platelet count, with or without thrombosis; other symptoms may include coetaneous reactions, from a simple allergic reaction to lesions and necrosis. The diagnosis of HIT is difficult because its signs are non-specific. Although both antigen and activation assays are very sensitive, activation assays have greater diagnostic specificity for clinical HIT. Diagnosis HIT is always a combination of clinical presentation and (preferably two different) laboratory tests. Lab tests for HIT vary in their correlation to clinical HIT. Each test provides unique information. Recently, the American College of Chest Physicians (ACCP) has posted updates on recommendations for testing of HIT. This should further increase the need of high performance testing for HIT.

Product details			
Item	Description	Test size	Product code
HITAlert RUO	A complete kit for the Reliable Diagnosis of Heparin-Induced Thrombocytopenia (HIT)	25 tests	IQP-396

RUO For research Use Only

V310309